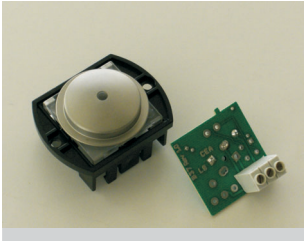


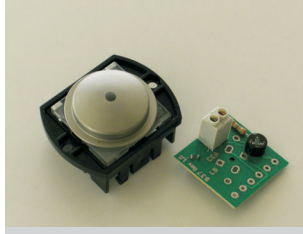
PULSANTE BLINDO Ø31
1NO O 1NC

CODICE:
PBLO1NO1NCAP



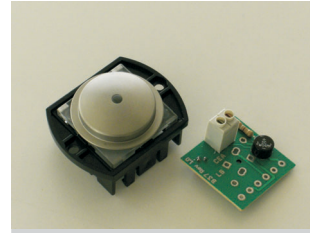
LUMINOSA BLINDO Ø31
LED VERDE

CODICE:
GBLL12VPR 12V
GBLL24VPR 24V



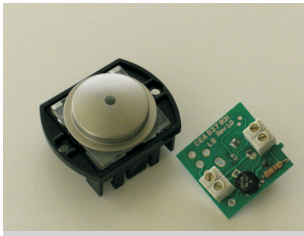
LUMINOSA BLINDO Ø31
LED ROSSO

CODICE:
GBLL12ROCC 12V
GBLL24ROCC 24V



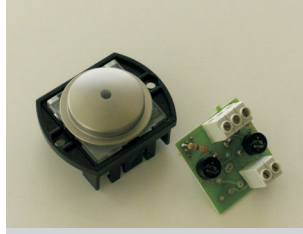
PULSANTE BLINDO Ø31
LED ROSSO
1NO

CODICE:
PBLL12R1NO 12V
PBLL24R1NO 24V



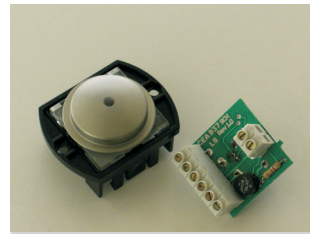
PULSANTE BLINDO Ø31
LED ROSSO E VERDE
1NO

CODICE:
PBLL12RV1NO 12V
PBLL24RV1NO 24V

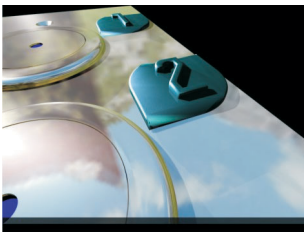


PULSANTE BLINDO Ø31
LED GIALLO
1NO O 1NC + 1NO O 1NC

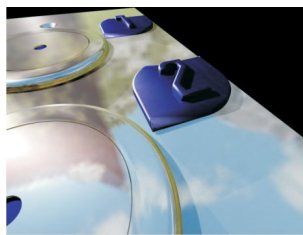
CODICE:
PBLL12G2NO2NCALL 12V
PBLL24G2NO2NCALL 24V



NUMERI O SIMBOLI
IN RILIEVO TIPO
FOGLIA AZZURRA



NUMERI O SIMBOLI
IN RILIEVO TIPO
FOGLIA BLU



NUMERI O SIMBOLI
IN RILIEVO TIPO
FOGLIA NICHELATA



CEA SRL
PRODUZIONE E DISTRIBUZIONE DI COMPONENTI PER ASCENSORI
PRODUCTION AND DISTRIBUTION OF LIFT COMPONENTS
20010 - POGGIANO MILANESE (MI) - ITALY - VIA T. TASSO, 21
TEL +39 02 93550626 FAX +39 02 93255621 E-MAIL: INFO@CEALIFT.IT WEBSITE: WWW.CEALIFT.IT